

Port Townsend Marine Science Center  
**Marine Conservation and Education**  
**Summer Internship 2022**  
Position Description



PTMSC is a non-profit marine conservation, science and education organization located in Fort Worden State Park and downtown Port Townsend, Washington. Our two park facilities house a small vibrant aquarium featuring life from the nearshore habitats of the Salish Sea, a museum with a fully-articulated orca skeleton and natural history collections, and classrooms. The new downtown facility is currently home to a visitor center, store, and gallery space. Our exhibits explore how human impacts such as climate change stress the fragile ecosystems in the Salish Sea, and what people can do, through their collective actions, to affect positive change. Visit [www.ptmsc.org](http://www.ptmsc.org) or find us on Facebook and Instagram to learn more.

PTMSC invites you to become a 2022 Summer Intern. The Marine Conservation and Education Intern works collaboratively with the Program Director, Aquarium Curator, Citizen Science Coordinator, Education Coordinator and AmeriCorps team members to support research projects in which PTMSC participates (described in more detail below). In addition to data collection and monitoring, you will have an opportunity to communicate with the public in meaningful ways about this research, and to have hands-on experiences caring for marine life in the Aquarium, all in support of our mission: *Inspiring Conservation of the Salish Sea*.

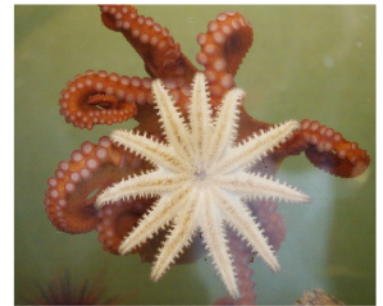


Photo courtesy of Wendy Feltham

PTMSC partners with many environmental organizations as well as State and Federal agencies in conducting and communicating current research on the marine environment. We provide summer Interns with local introductions to professional partners and organizations as well as peer Marine Science Centers in the greater Puget Sound area.

**Preferred Term:** This is a temporary position beginning June 13, 2022 and ending September 30, 2022. This position is full-time, and requires availability on most weekends.

*Please Note: If you are unavailable as early as June 13 or through September 30, we may consider alternate start and end dates.*

Typical tasks include:

- Assist with weekly monitoring, counting, measuring of pinto abalone in the satellite nursery.
- Assist with daily monitoring and data collection for the larval dungeness crab project.
- Participate in intertidal monitoring on select days in July at two or more sites.
- Prepare and provide information to visitors and summer camp participants about these projects. Forms of engagement might include short exhibit talks to visitors, hands-on demonstrations for summer campers, social media posts about the progress of one or more of the projects, or other ideas of interest to the Intern.
- May assist the staff in maintaining Aquarium exhibits and caring for animals.
- May assist with the Marine Mammal Stranding Network, Sea Star Wasting monitoring, Sound Toxins water quality monitoring, or other summer programs.

**Qualifications:**

- Ability and willingness to work with people of all ages and diverse backgrounds
- Marine science, ecology or conservation background
- Energetic, self-motivated, and willing to learn
- Independent, well organized, and a team worker
- Excellent verbal communication skills

- CPR and First Aid certification completed before arrival

**Physical Demands:** The physical demands below are representative of those that must be met by an intern to successfully perform the essential functions of this internship. Reasonable accommodations may be made to enable individuals with disabilities to perform the essential functions.

- Ability to lift 40 pounds from the floor
- Ability to work in tight and awkward spaces
- Ability to climb and work from ladders and stairs
- Ability to reach, lift and move 20 pounds from shoulder height
- Ability to work outside in inclement weather conditions

**Stipend:** Living stipend is \$1000 per month. Partial months are pro-rated. Stipend is paid in bi-monthly installments.

**Housing Arrangements:** Currently this position is open to applicants who can provide their own housing.

**University credit:** Interns are responsible for completing any paperwork necessary to receive university credit, if desired.

**Background check:** As this position involves working closely with youth, we will complete a required background check prior to hiring.

**COVID-19:** We require proof of full vaccination (including booster) for all staff and volunteers.

**To Apply:** We require a letter of interest, current resume, and list of three references. Incomplete applications will not be considered. Please ensure your references will be available for contact.

Priority deadline for submissions: Tuesday, May 10, 2022 at 11:59pm. Positions are open until filled.

Please send application materials to Diane Quinn, Program Director: [dquinn@ptmsc.org](mailto:dquinn@ptmsc.org)

### **Equal Opportunity Employer**

PTMSC provides equal employment opportunity (EEO) to all persons regardless of age, color, national origin, citizenship status, physical or mental disability, race, religion, creed, gender, sex, sexual orientation, gender identity and/or expression, genetic information, marital status, status with regard to public assistance, veteran status, or any other characteristic protected by federal, state or local law.

About a few of our ongoing projects at PTMSC:

**Pinto Abalone Satellite Nursery:** Pinto or northern abalone (*Haliotis kamtschatkana*) once thrived in the Salish Sea. Grazing on kelp and other seaweeds, these large marine snails increase the health and diversity of nearshore rocky reefs. Overharvesting and poaching have decimated their number, leaving too few to repopulate the reefs despite their protected status. PTMSC partners with Puget Sound Restoration Fund and the Washington Department of Fish and Wildlife to raise and release juvenile pinto abalone, boosting the population to self-sustaining levels. Our small (3 tank) satellite nursery is part of our public exhibit space in the aquarium where visitors and students can follow the story of our collective efforts to restore this population in the Salish Sea.

**Larval Crab Study:** As a member of the Pacific Northwest Crab Research Group, PTMSC participates in a larval Dungeness crab study. A light trap is suspended under the pier from April through mid-September. Each day 1-2 volunteers/staff pull up the light trap from under the pier, identify and count the larval crab, and lower the light trap back under the pier. More about the project can be found at the [Larval Crab Study website](#). As a keystone species of our food web, Dungeness crab are vital to a healthy Salish Sea. Understanding their population dynamics will enhance fisheries management and forecasting. The PCRG is a collaborative collection of partners from tribal, state, and federal governments, academia, nonprofits and community members working to promote and support sustainable Dungeness crab populations in the PNW by addressing knowledge gaps through strategic research.

**Intertidal Monitoring:** Annual Citizen Science project working with scientists from the Dept. of Natural Resources and community volunteers to monitor the intertidal area of a permanent plot. At least two beaches per year are surveyed: Cape George Beach (within the Protection Island Aquatic Reserve) and Kinzie Beach at Fort Worden State Park. Species ID and density data is collected by PTMSC and shared with the DNR Aquatic Reserves Program.