



PORT TOWNSEND  
MARINE  
SCIENCE  
CENTER

## Forest Scavenger Hunt

Can you find all six things on a walk in the forest near PTMSC? Draw or take a picture of the things as you find them, and feel free to tag any cool finds @ptmarinescictr on Instagram!

*Remember to be a good forest visitor! Leave natural objects where you found them and don't interact with wildlife.*

### Find 2 different types of leaves.

*How do they compare to each other?*

*How do the trees or plants they come from differ?*

### Listen for animals.

*What animals are you able to hear in the trees or in the sky?*

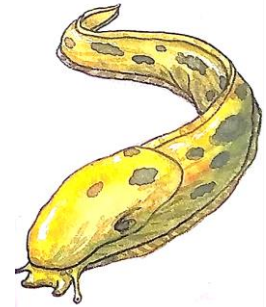
*What do they sound like? How would you describe it?*

### Find an interesting texture.

*What does it feel like?*

*What is it?*

*You might also see these critters:*



banana slug



Steller's jay



white-tailed deer fawn

**Find an animal track (footprint, scat, or hair).**

*Was it easy to find the track?*

*What animal do you think it's from?*

**Find a mushroom growing on the forest floor.**

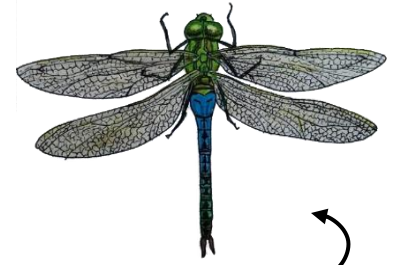
*What does it look like?*

*Where is it growing?*

**Find a rotting log.**

*What does it smell like?*

*Do you think rotting logs are important in the forest?*



green darner



American crow



common raccoon



sword fern

**The coolest thing I found was:**